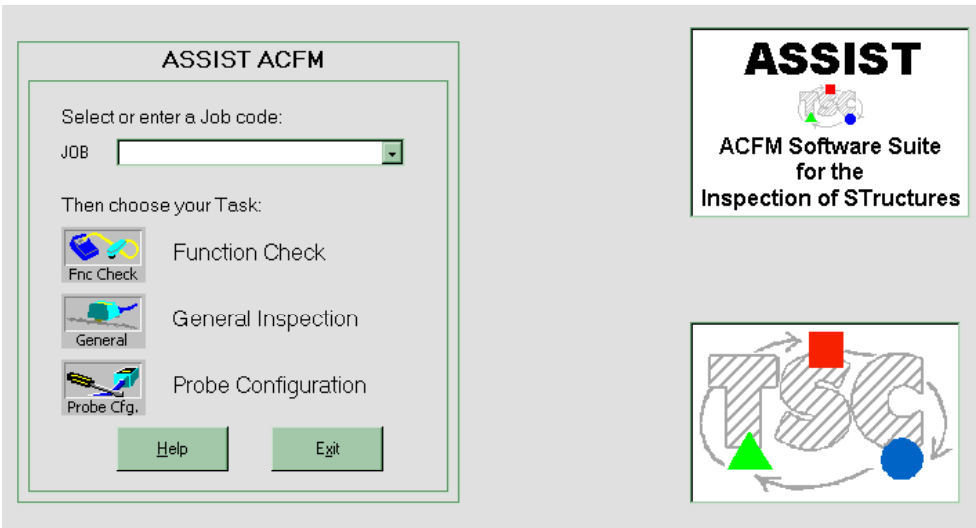


# ASSISTant

New, improved software for the AMIGO

Following on from the successful ASSIST software produced to support array probes on the AMIGO instrument, TSC have taken many of the new features in ASSIST and included them in new software to replace QFM.

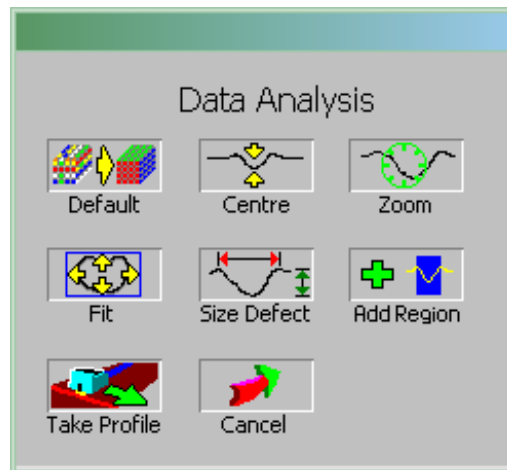
ASSISTant is available now in place of QFM for new AMIGO customers, or can be purchased as a low-cost upgrade for existing AMIGO customers.



Contact:  
 TSC Inspection Systems  
 6 Mill Square  
 Wolverton Mill  
 Milton Keynes  
 MK12 5RB, U.K.

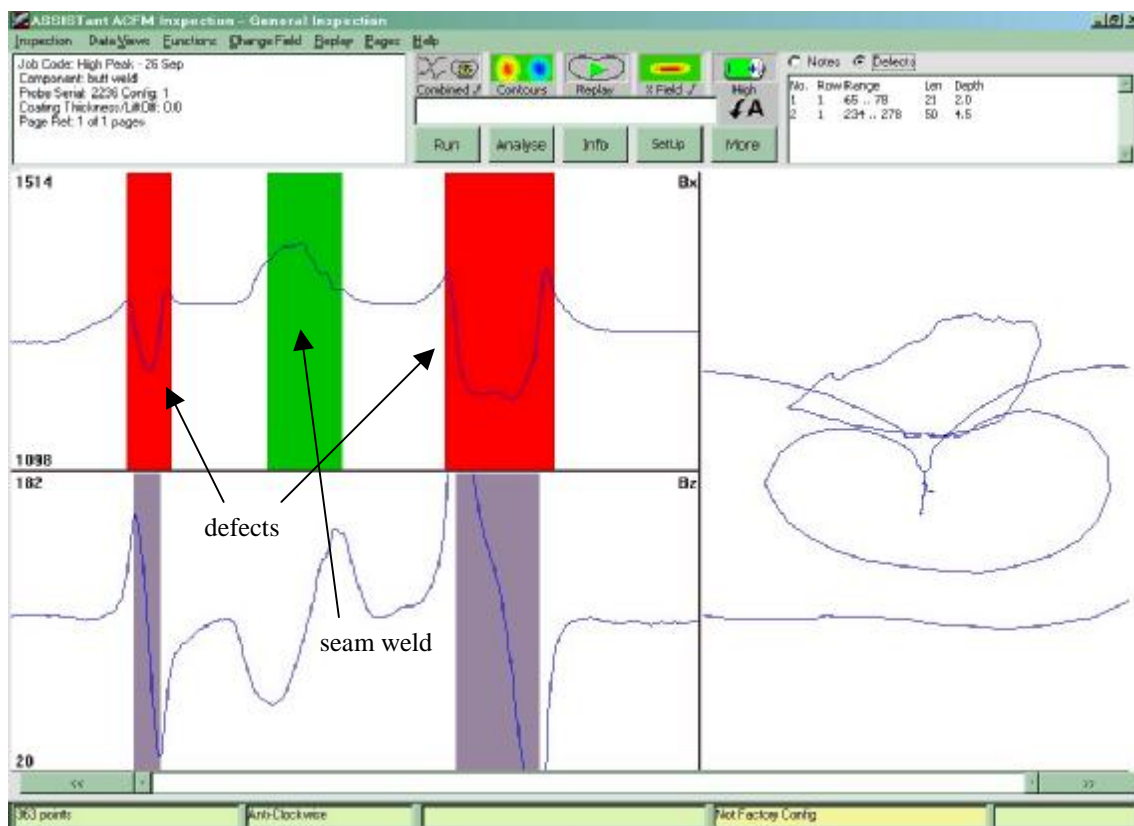
Tel: +44 (0)1908 317444  
 Fax: +44 (0) 1908 220959

[sales@tscinspectionssystems.com](mailto:sales@tscinspectionssystems.com)  
[www.tscinspectionssystems.com](http://www.tscinspectionssystems.com)



Among the many new features available in ASSISTant are:

- Automated file naming (with date/time stamp). Data files are stored by job code and component description, making searching old data easier.
- Profiles (use of any data page as a background to compare against other pages). Useful when data is affected by geometric features.
- Free entry Notes on each data page.
- Ability to store sizing data from multiple defects on a page. Automatic location and measurement of Bx minimum and Bz peak-trough values during sizing.
- Defects marked in coloured bands on display after sizing.
- User-controlled marking of anomalous features (such as seam welds, undercut) in coloured bands.
- Automatic fitting of data to screen width.
- Easier switching between views, as well as new combination views (time-base and contour plot). Single key centring of display, and zooming into marked region.
- Improved print-outs for reports.
- User-friendly ICON buttons.
- Easier transition to full ASSIST for array probes, while minimising differences from QFM software so that operators trained on QFM will not require any further training.



Example display showing 2 defects and anomaly (seam weld)