

ENCODER ACFM PROBE

- Position Encoder
- Twin Fields
- Control Buttons
- Low wear
- Up to 8 Channel Sensor Array



TSC are pleased to announce a revolutionary new design of ACFM probe. The new probe features a position encoder to provide a continuous position reference and the opportunity for rapid defect location, multiple sensor options for greater coverage, option of multiple field directions. Other new features significantly improve the usability of the probe while at the same time probe wear has been significantly reduced.

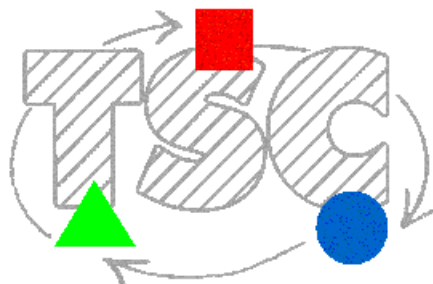
How has this been achieved?

The probe nose is protected by a moving belt which is laid onto the surface as the probe is scanned around the weld. This avoids any abrasion of the probe head, all wear being taken on the replaceable belt. Wheels are fitted to the back of the probe to aid movement and eliminate sliding abrasion.

The moving belt provides position encoding. New ASSIST Lite software enables the data to be displayed with respect to position rather than time. This means crack end locations can be obtained from the software thereby avoiding the need to physically locate the crack end on the surface. This significantly reduces inspection time.

We have added a second field coil as an option. By electronically switching fields as the probe is scanned, inspection for cracks in any orientation is achieved using just a single scan. As well as the conventional Bx and Bz sensors, the probe can be supplied with By sensors providing better resolution of transverse cracks without the need for additional scans.

We have added the option of array capability which means a wider inspection area is obtained and which allows parent plate, Heat Affected Zone (HAZ) and weld toe to be inspected in a single scan. This is particularly useful when inspecting for environmental cracking and it situations where 360 degree cracks are expected.



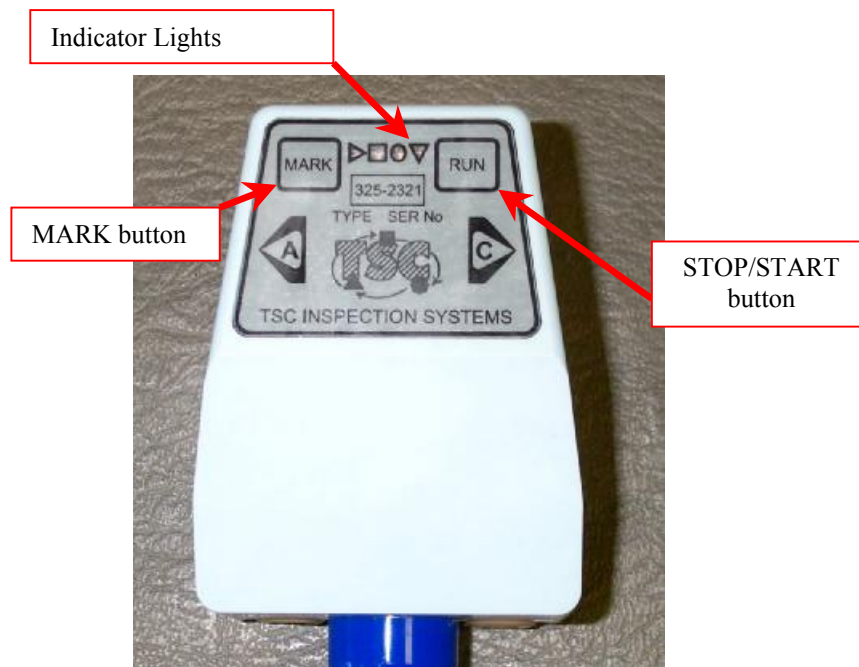
We have added control buttons on the probe to allow scans to be started and stopped without use of the computer keyboard. We have even added a second button to allow markers to be inserted into the data. Since you no longer need to be at the PC to start the scan we have included a series of status LEDs to allow the operator to check the status without reference to the display.

And finally, to take advantage of these new features, we have introduced a new software package ASSIST Lite which provides a wide range of easy to use features and improved print-outs for reporting purposes.

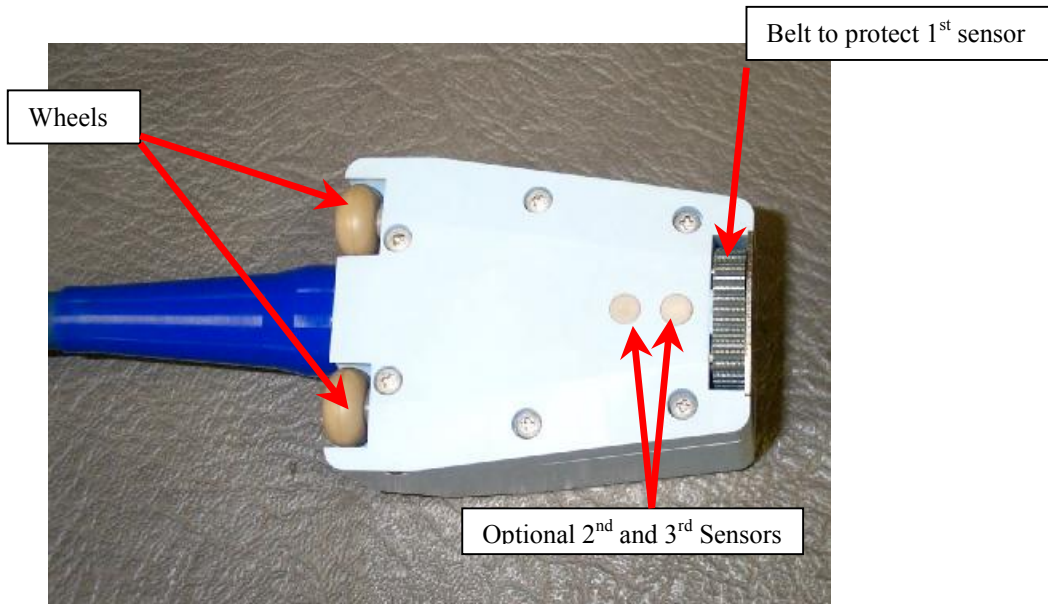
The new probe is designed to work with TSCs Amigo instrument. An upgrade is required in order to make use of the new features and in most cases this can be provided without returning the Amigo back to base.

The new probe is available in 4 configurations:

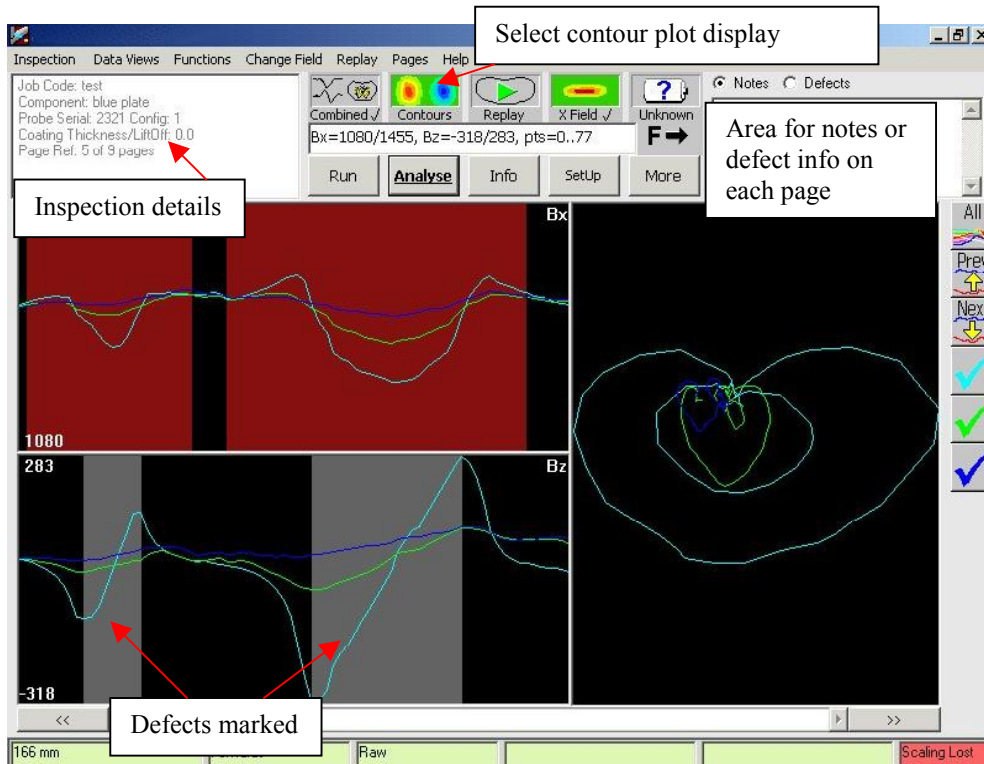
| | Position Encoder | Stop/Start Buttons | Status Lights | 3 row array | Twin Fields | By Sensors |
|----------|------------------|--------------------|---------------|-------------|-------------|------------|
| Type 328 | 4 | 4 | 4 | 6 | 6 | 6 |
| Type 327 | 4 | 4 | 4 | 4 | 6 | 6 |
| Type 326 | 4 | 4 | 4 | 6 | 4 | 4 |
| Type 325 | 4 | 4 | 4 | 4 | 4 | 4 |



New weld probe showing new features to assist operation



New features to improve wear resistance and increase area of coverage



New Features in ASSIST Lite Software

For further details please contact

Sales Department
 TSC Inspection Systems
 6 Mill Square
 Featherstone Road
 Wolverton Mill
 Milton Keynes MK12 5RB
 England

Tel No: +44 (0) 1908 317444
 Fax No: +44 (0) 1908 220959
 Email: sales@tscinspectionssystem.com
 Web: www.tscinspectionssystem.com

As part of its continuing programme of product information, TSC reserve the right to alter specifications without prior notice.